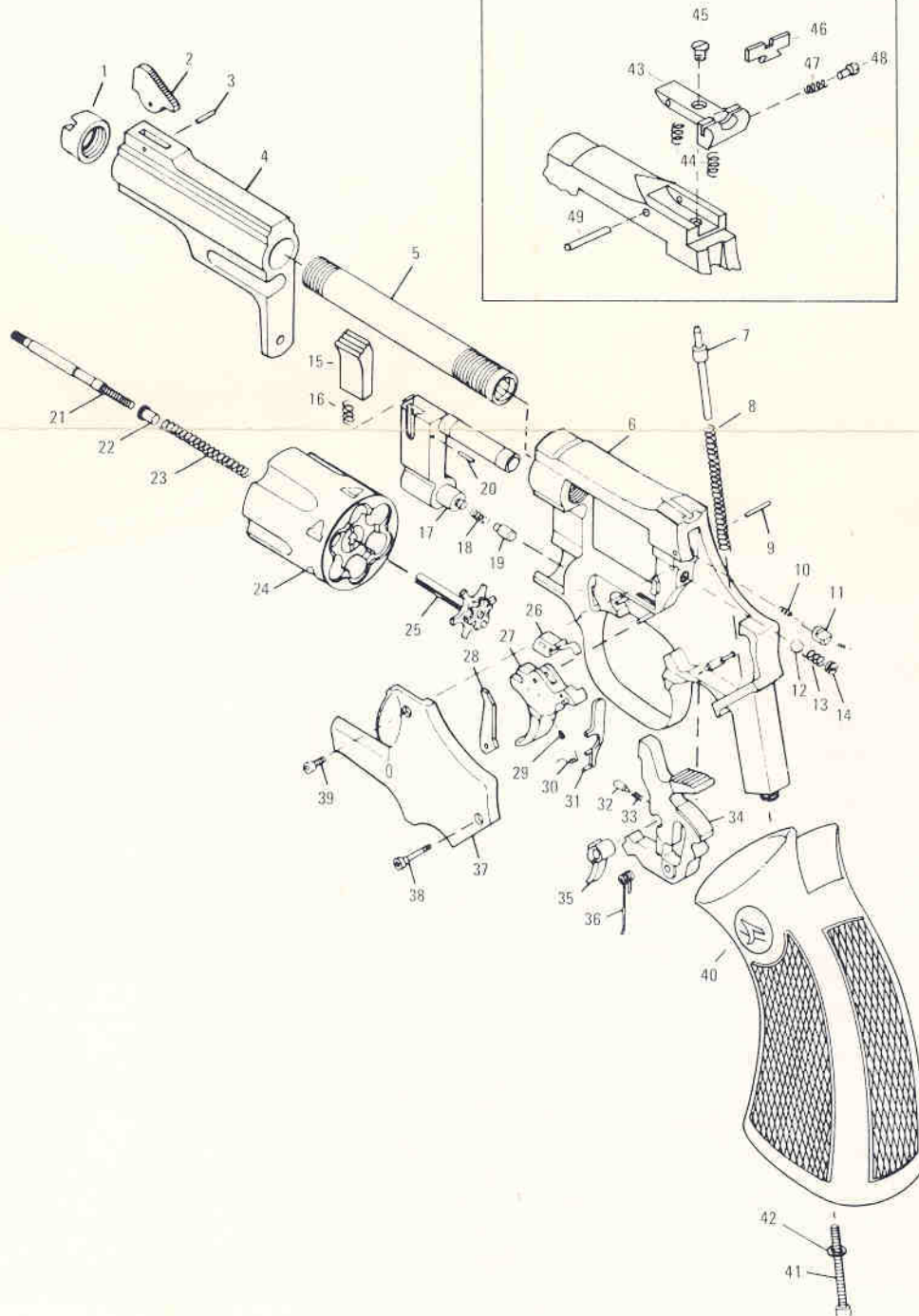


HIGH STANDARD SPORTING FIREARMS • 1817 DIXWELL AVENUE, HAMDEN, CONNECTICUT 06514

A DIVISION OF THE LEISURE GROUP, INC.

## PARTS BREAKDOWN

SENTINEL MK II — .357 MAGNUM  
SENTINEL MK III — .357 MAGNUM



**PARTS LIST FOR**

**SENTINEL MK II — .357 MAGNUM  
SENTINEL MK III — .357 MAGNUM**

REF. NO.	PART NO.	PART NAME	REF. NO.	PART NO.	PART NAME
1	52914	Barrel Nut	17	52943	Crane
2		Front Sight MK II For	18	52944	Bolt Spring
	52915	2½" Bbl.	19	52945	Bolt Plunger
	52916	4" Bbl.	20	52948	Cylinder Latch Retaining Pin
	52917	6" Bbl.	21	52947	Ejector Rod
2		Front Sight MK III For	22	52948	Ejector Rod Bushing
	52918	2½" Bbl.	23	52949	Ejector Spring
	52919	4" Bbl.	24	52950	Cylinder
	52920	6" Bbl.	25	52951	Extractor
3	52921	Front Sight Pin	26	52952	Bolt
4		Shroud MK II For	27	52953	Trigger
	52922	2½" Bbl.	28	52954	Hand
	52923	4" Bbl.	29	52955	Trigger Stop Screw
	52924	6" Bbl.	30	52956	Hand Spring
4		Shroud MK III For	31	52957	Firing Pin Connector
	52925	2½" Bbl.	32	52958	Strut Plunger
	52926	4" Bbl.	33	52959	Strut Spring
	52927	6" Bbl.	34	52960	Hammer
5	52928	Barrel - 2½"	35	52961	Strut
	52929	4"	36	52962	Trigger Return Spring
	52930	6"	37	52963	Side Plate
6	52931	Frame MK II	38	52964	Side Plate Screw, Long
	52932	Frame MK III	39	52965	Side Plate Screw, Short
7	52933	Main Spring Guide	40	52913	Grip
8	52934	Main Spring	41	52966	Grip Screw
9	52935	Firing Pin Retaining Pin	42	52967	Grip Screw Washer
10	52936	Firing Pin Spring	43	52896	Rear Sight Base
11	52937	Firing Pin	44	52888	Elevation Spring (2)
12	52938	Cylinder Aligning Ball	45	52889	Elevation Screw
13	52939	Cylinder Aligning Ball Spring	46	52882	Rear Sight Blade
14	52940	Cylinder Aligning Ball Screw	47	52894	Windage Spring
15	52941	Cylinder Latch	48	52893	Windage Screw
16	52942	Cylinder Latch Spring	49	52891	Rear Sight Pivot Pin