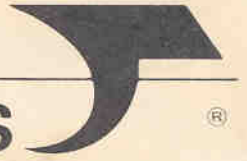


# HIGH STANDARD SPORTING FIREARMS

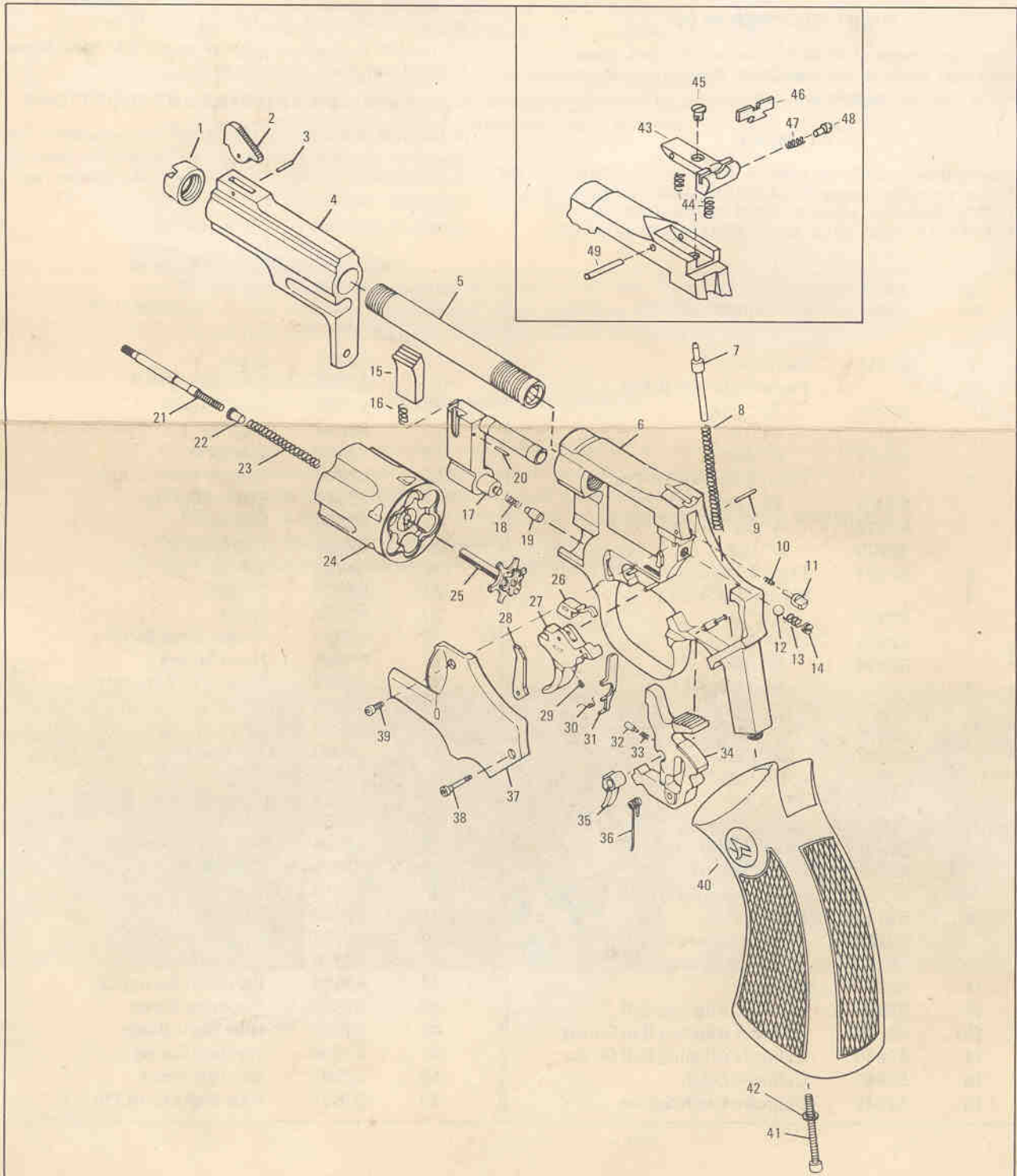


THE LEISURE GROUP, INC. • 1817 DIXWELL AVENUE, HAMDEN, CONN. 06514 • TEL.: (203) 248-5531

## PARTS LIST FOR

SENTINEL MK II — .357 MAGNUM

SENTINEL MK III — .357 MAGNUM



# HIGH STANDARD

## REVOLVERS

SENTINEL MK II — .357 MAGNUM

SENTINEL MK III — .357 MAGNUM

### HOW TO ORDER REPAIR PARTS

The following information must be furnished when ordering replacement parts:

1. Model Name and Series Number
2. Serial Number
3. Number and Name of Parts

### MINIMUM ORDER \$4.00

A minimum charge of \$4.00 is made on all orders where the normal cost would be less than \$4.00. If you wish, order extra parts to make up the minimum charge.

### PAYMENT

All parts shipments will be made by Parcel Post C.O.D. unless advance remittance is made. PLEASE DO NOT SEND CASH OR STAMPS, CHECKS, MONEY ORDERS OR DRAFTS ARE ACCEPTABLE AND WILL SAVE YOU C.O.D. CHARGES.

### FACTORY SERVICE

If parts are to be fitted at the factory, send firearms marked for the attention of our SERVICE DEPARTMENT, furnishing complete and specific repair instructions.

In cases where repair cost exceeds \$15.00 an estimate will be forwarded for your approval before work is started.

When parts and labor charges are \$15.00 or less, the gun will be repaired immediately to save time. A MINIMUM of \$8.50 will be charged on servicing firearms at the factory.

All repaired guns will be returned on a C.O.D. basis. Please do not send cash, check or money order.

### REVOLVER SHIPPING INSTRUCTIONS

BONAFIDE DEALERS IN FIREARMS are permitted by postal regulations to send revolvers to the factory by Parcel Post. INDIVIDUALS are not permitted to mail firearms and we recommend shipment by railway express.

All shipments to factory must be prepaid.

REF. NO.	PART NO.	DESCRIPTION	REF. NO.	PART NO.	DESCRIPTION
1	52914	Barrel Nut	17	52943	Crane
2		Front Sight MK II For	18	52944	Bolt Spring
	52915	2½" Bbl.	19	52945	Bolt Plunger
	52916	4" Bbl.	20	52948	Cylinder Latch Retaining Pin
	52917	6" Bbl.	21	52947	Ejector Rod
2		Front Sight MK III For	22	52948	Ejector Rod Bushing
	52918	2½" Bbl.	23	52949	Ejector Spring
	52919	4" Bbl.	24	52950	Cylinder
	52920	6" Bbl.	25	52951	Extractor
3	52921	Front Sight Pin	26	52952	Bolt
4		Shroud MK II For	27	52953	Trigger
	52922	2½" Bbl.	28	52954	Hand
	52923	4" Bbl.	29	52955	Trigger Stop Screw
	52924	6" Bbl.	30	52956	Hand Spring
4		Shroud MK III For	31	52957	Firing Pin Connector
	52925	2½" Bbl.	32	52958	Strut Plunger
	52926	4" Bbl.	33	52959	Strut Spring
	52927	6" Bbl.	34	52960	Hammer
5	52928	Barrel - 2½"	35	52961	Strut
	52929	4"	36	52962	Trigger Return Spring
	52930	6"	37	52963	Side Plate
6	52931	Frame MK II	38	52964	Side Plate Screw, Long
	52932	Frame MK III	39	52965	Side Plate Screw, Short
7	52933	Main Spring Guide	40	52913	Grip
8	52934	Main Spring	41	52966	Grip Screw
9	52935	Firing Pin Retaining Pin	42	52967	Grip Screw Washer
10	52936	Firing Pin Spring	43	52896	Rear Sight Base
11	52937	Firing Pin	44	52888	Elevation Spring (2)
12	52938	Cylinder Aligning Ball	45	52889	Elevation Screw
13	52939	Cylinder Aligning Ball Spring	46	52882	Rear Sight Blade
14	52940	Cylinder Aligning Ball Screw	47	52894	Windage Spring
15	52941	Cylinder Latch	48	52893	Windage Screw
16	52942	Cylinder Latch Spring	49	52891	Rear Sight Pivot Pin

CAUTION: FOR SAFETY'S SAKE DO NOT ATTEMPT TO REPAIR REVOLVER WITHOUT RECEIVING REL

**INSTRUCTIONS FOR THE OPERATION AND CARE OF THE  
SENTINEL MK II — .357 MAGNUM  
SENTINEL MK III — .357 MAGNUM**

**LOADING AND FIRING: —**

1. Be sure that the Hammer is in the forward position.
2. Depress the Cylinder Latch in a downward direction and, at the same time, swing out the Cylinder by pressing the right side of the Cylinder with the right index finger.
3. Insert a cartridge into each of the chambers of the Cylinder.
4. Return Cylinder to frame by pressing the left thumb against the Cylinder. Be sure the Cylinder Latch engages.
5. Revolver may be fired double action merely by squeezing trigger for each shot.
6. Target shooting, or other shooting demanding a maximum of accuracy, is usually done single action. For single action shooting, pull back Hammer to cocked position for each shot.
7. To unload revolver or to remove fired cartridge repeat Steps 1 and 2 above and then push ejector rod to the rear. The spring loaded ejector will return automatically to the forward position.

**SIGHTING INSTRUCTIONS: —**

High Standard revolvers are sighted in at a range of 50 feet. To adjust the Rear Sight on the Sentinel MK III, turn the elevation screw clockwise to lower the point of impact. Turn the windage screw clockwise to move the point of impact to the left.

**CARE AND CLEANING: —**

1. Cleaning can be accomplished in the assembled condition.
2. Run an oiled patch through the bore and the chamber to remove powder residue. In cases where extreme fouling or leading has occurred, a clean patch saturated with a lead solvent should be run through the bore and allowed to stand for several hours. The bore should then be wiped clean and oiled. Repeat if necessary.
3. A few drops of oil applied to the moving parts or worked into the action through the various frame openings is recommended.
4. Wipe all exterior surfaces of the revolver with an oily rag.

