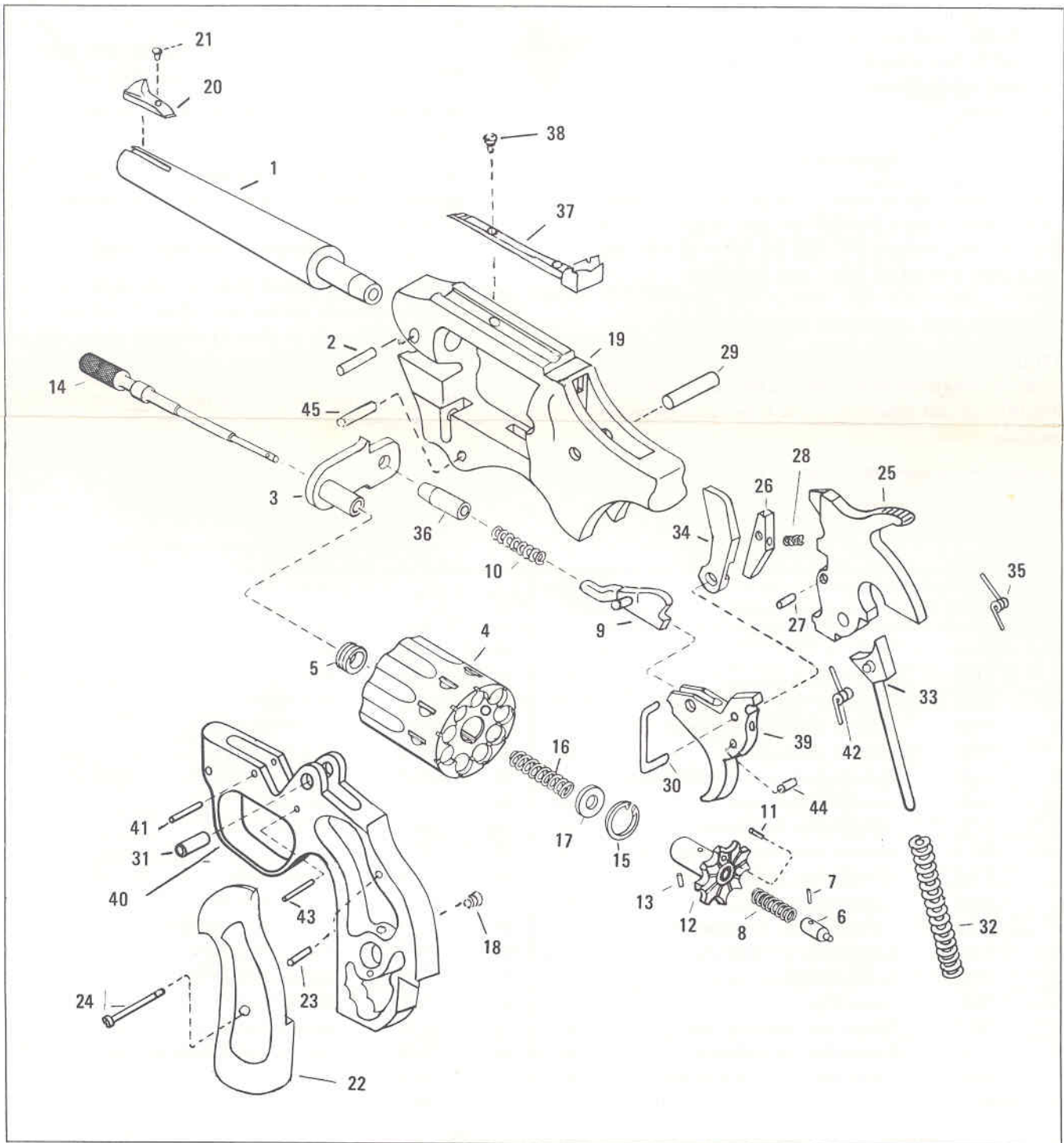




HIGH STANDARD SPORTING FIREARMS

THE LEISURE GROUP, INC. • 1817 DIXWELL AVENUE, HAMDEN, CONN. 06514 • TEL.: (203) 248-5531

PARTS PRICE LIST—.22 CALIBER MODEL "R-109" "KIT-GUN"



HI-STANDARD

.22 CALIBER DOUBLE - AND SINGLE- ACTION REVOLVER

PARTS LIST AND PRICES

(Prices Subject to Change Without Notice)

MODEL R-109 BLUE

HOW TO ORDER REPAIR PARTS

The following information must be furnished when ordering replacement parts:

1. MODEL NAME AND NUMBER
2. CATALOG NUMBER
3. PART NUMBER AND NAME
4. COLOR

PAYMENT

All parts shipments will be made by Parcel Post C.O.D. unless advance remittance is made. PLEASE DO NOT SEND CASH OR STAMPS. CHECKS, MONEY ORDERS OR DRAFTS ARE ACCEPTABLE AND WILL SAVE YOU C.O.D. CHARGES.

REVOLVER SHIPPING INSTRUCTIONS

BONAFIDE DEALERS IN FIREARMS are permitted by postal regulations to send revolvers to the factory by Parcel Post. INDIVIDUALS are not permitted to mail firearms and we recommend shipment by railway express.

ALL SHIPMENTS TO FACTORY MUST BE PREPAID.

FACTORY SERVICE

If parts are to be fitted at the factory, send firearms marked for the attention of our gun repair department, furnishing complete and specific repair instructions. In cases where repair cost exceeds \$15.00 an estimate will be forwarded for your approval before work is started.

When parts and labor charges are \$15.00 or less the gun will be repaired immediately.

All repaired guns will be returned on a C.O.D. basis unless an open account is established with us or we receive remittance in advance.

MINIMUM ORDER \$2.00

A minimum net charge of \$2.00 is made on all orders where the normal cost would be less than \$2.00. If you wish, we suggest ordering other parts to cover the minimum charge after deducting trade discount.

Unless a flat rate charge is specified a minimum of \$8.50 will be charged for servicing firearms at the factory.

REF. NO.	PART NO.	DESCRIPTION	RETAIL PRICE EACH	REF. NO.	PART NO.	DESCRIPTION	RETAIL PRICE EACH
1	†50254	Barrel - 4"	\$11.00	18	7301	Escutcheon Nut	\$.45
2	† 7104	Barrel Pin	.40	19	††52050	Frame	9.00
3	7157	Crane Assembly	4.00	20	52051	Front Sight	2.25
4	7508	Cylinder (Not Sold Separately)		21	1098	Front Sight Screw	.40
	7570	Cylinder Assembly	22.60	22	52060	Grip, Walnut (Pair)	9.00
5	†† 7110	Cylinder Bushing (Not Sold Separately)		23	52057	Grip Alignment Pin	.40
6	7575	Cylinder Lock Plunger	.95	24	52054	Grip Screw	.40
7	7112	Cylinder Lock Plunger Pin	.40		† 7632	Hammer Assembly	9.50
8	7513	Cylinder Lock Plunger Spring	.40	25	† 7626	Hammer	5.50
9	7162	Cylinder Stop Assembly	2.35	26	7129	Hammer Pawl	1.55
10	7158	Cylinder Stop Spring	.40	27	7130	Hammer Pawl Pin	.40
11	7245	Cylinder Ejector Alignment Pin	.40	28	7131	Hammer Pawl Spring	.40
12	†† 7580	Ejector (Not Sold Separately)		29	7133	Hammer Pivot Pin	.40
13	7117	Ejector Alignment Dowel	.40	30	7134	Hammer Safety Stop	.40
14	7579	Ejector Rod	1.55	31	7182	Hammer Sleeve	.40
15	7577	Ejector Rod Retaining Ring	.40	32	7135	Hammer Spring	.40
16	7576	Ejector Rod Return Spring	.40	33	7645	Hammer Spring Guide Assembly	1.90
17	7578	Ejector Rod Return Spring Washer	.40	34	† 7574	Hand	1.55

CAUTION: FOR SAFETY'S SAKE DO NOT ATTEMPT TO REPAIR REVOLVER WITHOUT RECEIVING RELIABLE

REF. NO.	PART NO.	DESCRIPTION	RETAIL PRICE EACH	REF. NO.	PART NO.	DESCRIPTION	RETAIL PRICE EACH
35	7181	Hand Spring	\$.40	40	†52052	Trigger Guard	\$ 8.00
36	7140	Link Pivot Pin	.80	41	7149	Trigger Pivot Pin	.40
37	52059	Rear Sight	9.00	42	7270	Trigger Spring	.40
38	52058	Rear Sight Screw	.40	43	7149	Trigger Spring Retaining Pin	.40
39	7627	Trigger	4.75	44	7130	Trigger Spring Contact Pin	.40
	7633	Trigger & Trigger Spring Contact Pin Assembly	5.00	45	7642	Trigger Guard Assembly Pin	.40

Parts Marked with (†) Must be fitted by Gunsmith
 Parts Marked with (††) Must be fitted at Factory.
 (Grips Sold Only in Matching Pairs)

INSTRUCTIONS FOR OPERATION AND CARE OF YOUR "KIT-GUN" REVOLVER

LOADING AND FIRING:

1. Be sure that hammer is forward.
2. Pull ejector rod forward and, at the same time, swing out cylinder to left by pressing right index finger against it (see Figure 1).
3. Insert one .22 caliber short, long or long rifle cartridge in each of the nine chambers of the cylinder.
4. Return cylinder to frame by pressing thumb against cylinder. Do not push ejector latch forward when closing cylinder. The revolver is now ready to fire.
5. Revolver may be fired double action merely by squeezing trigger for each shot.
6. Target shooting, or other shooting demanding a maximum of accuracy, is usually done single action. For single-action shooting, pull back hammer to cocked position for each shot.
7. To unload revolver or remove fired cartridge cases, pull ejector rod forward, swing out cylinder to left (see Figure 1), and push ejector rod to rear (see Figure 2).
8. Spring loaded ejector will return automatically to forward position.
9. Because cylinder chambers are counterbored, revolver may be "dry-fired" without injury to cylinder.

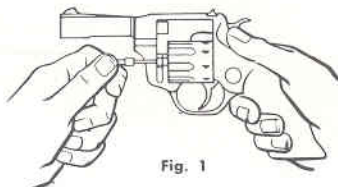
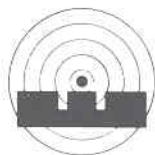


Fig. 1



Fig. 2



Correct Sighting

used. Unless mud or foreign matter enters the bore, it should be cleaned very sparingly. If cleaning becomes necessary, a stiff bristle brush or copper wire brush for .22 caliber guns should be used. After brushing, the bore should be swabbed with flannel patches attached to a .22 caliber cleaning rod (patches should be moistened with a good quality gun oil). The swabbing of the bore should be continued until the patches come out clean. IT IS STRONGLY EMPHASIZED THAT THE BORE RARELY REQUIRES CLEANING EXCEPT FOR THE PRESENCE OF MUD OR FOREIGN MATTER.

3. In cleaning the cylinders of the revolver, the same procedure as used in the cleaning of the bore should be employed.
4. The entire gun should be wiped dry of kerosene or cleaning solution with a clean absorbent cloth and then the surfaces should be wiped with a lightly oiled patch.
5. For best results in rust prevention only gun oils containing silicones should be used.
6. A few drops of light-bodied oil should be applied to the action internally near the pivot point of the hammer. Retract the hammer first — then work the trigger double action a few times to distribute the oil. The same procedure applies to the cylinder crane link and the ejector latch slot in the housing affixed to the barrel.
7. Avoid using heavy-bodied oils. No animal or vegetable oils should ever be used in guns.
8. If the gun is used in climates where extreme cold prevails, powdered graphite should be substituted for oil in lubricating the internal mechanism. In moist climates the gun should be cleaned more frequently and preferably stored in a container treated with silicones to prevent rust.

SIGHTING INSTRUCTIONS:

Hi-Standard Revolvers are sighted in at a range of 50 feet. To adjust the rear sight on the "KIT-GUN", turn the elevation screw clockwise to raise the point of impact. If lateral adjustment is required, turn the windage screw clockwise to move the point of impact to the left.

CARE AND CLEANING:

1. If, after extensive shooting, cleaning becomes necessary, the use of kerosene or any other good quality cleaning solution is recommended.
2. In cleaning the face of the cylinder or muzzle, an old toothbrush or similar brush should be