

**PARTS LIST FOR**  
**J. C. HIGGINS**  
**MODEL 80 10-SHOT .22 CALIBER LONG RIFLE**  
**AUTO-LOADING PISTOL**

— MODEL NUMBER —

583.800

This number is the Model Number of your pistol. It will be found on the left side of the barrel, just forward of the frame. Always mention the Model Number as it appears on the pistol in all correspondence or when ordering repair parts.

— Ordering Information for —  
Retail and Mail Order Stores

Refer to the Division 6 Authorized Price List 583.00 for current selling prices, availability and ordering information.

— Filing Instructions —

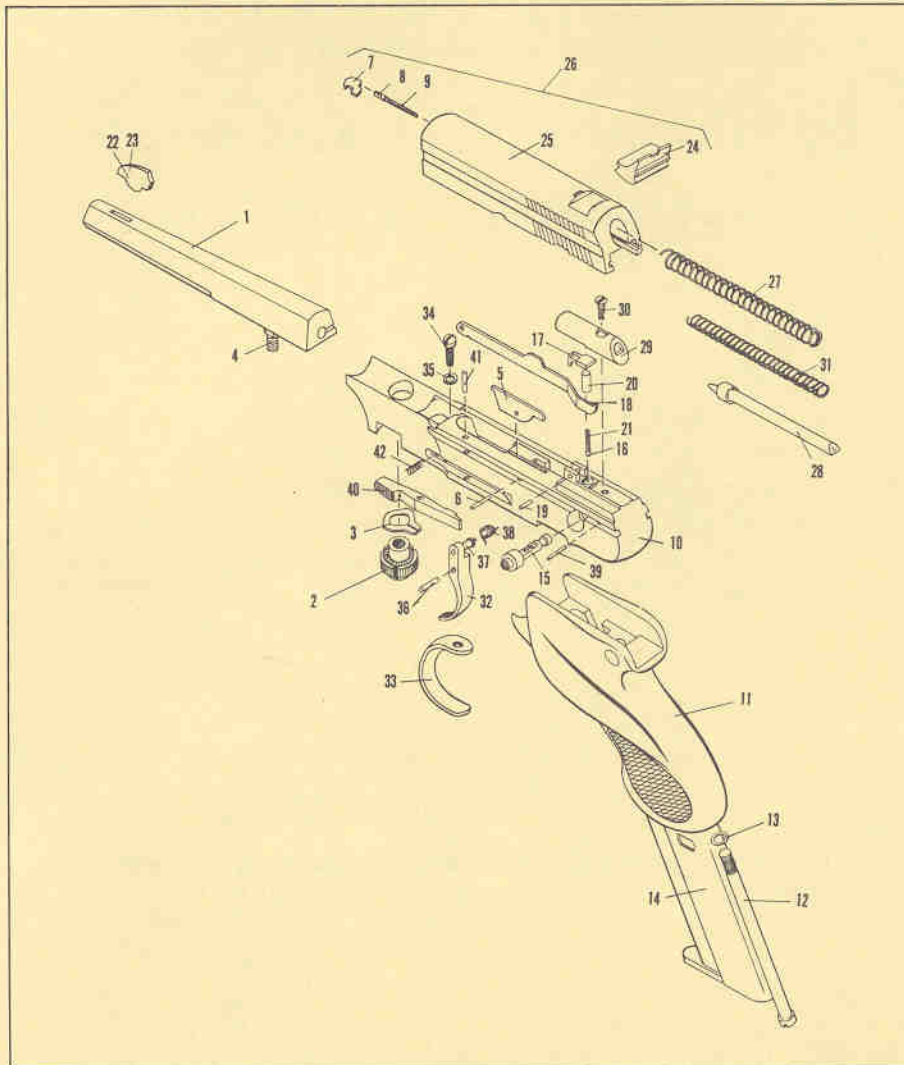
File this Parts List immediately after Part List No. 583.99 in the Division 6 Standard Nomenclature GREY BINDER, Volume 2.

**SEARS, ROEBUCK AND CO.**

April, 1956

**PARTS LIST FOR J. C. HIGGINS MODEL 80 10 SHOT .22 CALIBER LONG RIFLE  
AUTOLOADING PISTOL, MODEL NUMBER 583.800**

When ordering parts or assemblies, please specify Model and Model Number of your pistol (i.e. Model 80, Model Number 583.800). Specify Reference Number Part Number and Part Name. All parts identified with an asterisk (\*) must be fitted to the pistol by gunsmith in Sears gun shops, or by other competent gunsmiths.



P A R T S   L I S T

REF. NO.	PART NO.	PART NAME	REF. NO.	PART NO.	PART NAME
1	3064	Barrel, 4½"	21	3047	Sear Spring
1	3065	Barrel, 6½"	22	3061	Sight, Front, Short Barrel
2	3052	Barrel Nut	23	3062	Sight, Front, Long Barrel
3	3051	Barrel Nut Lockwasher	24	1245	Sight, Rear
4	3025	Barrel Set Screw	*25	3066	*Slide (only)
5	3027	Ejector	*26	3068	Slide Assembly (includes Rear Sight, Extractor, etc.)
6	3024	Ejector Pin	27	3033	Slide Spring
7	3008	Extractor	*28	3014	Striker
8	3003	Extractor Plunger	*29	3016	Striker Sleeve
9	1005	Extractor Spring	30	3026	Striker Sleeve Screw
10	3055	Frame (Not sold Separately)	31	3034	Striker Spring
11	3070	Grip (with Medallion)	32	3011	Trigger
12	3007	Grip Bolt	33	3063	Trigger Guard
13	3032	Grip Bolt Washer	34	3050	Trigger Guard Screw
14	3073	Magazine Assembly	35	3020	Trigger Guard Screw Lockwasher
*15	3056	Safety	36	3004	Trigger Pin
16	3001	Safety Detent	37	3005	Trigger Pull Pin
17	3015	Sear	38	3021	Trigger Spring
*18	3029	Sear Bar	39	328	Striker Sleeve Screw Retaining Pin
19	3000	Sear Pin	40	3013	Magazine Catch
20	3002	Sear Plunger	41	3023	Magazine Catch Pin
			42	122	Magazine Catch Spring