

PARTS LIST FOR

**Sears**

**MODEL 66  
AUTOLOADING SHOTGUN  
12 GAUGE**

IDENTIFICATION NUMBER

583.606

This number is the Model Number of your Model 66 Automatic Shotgun. It will be found on the left side of the barrel. Always mention this model number when communicating with us regarding the Shotgun or when ordering parts.

PRICE LIST REFERENCE

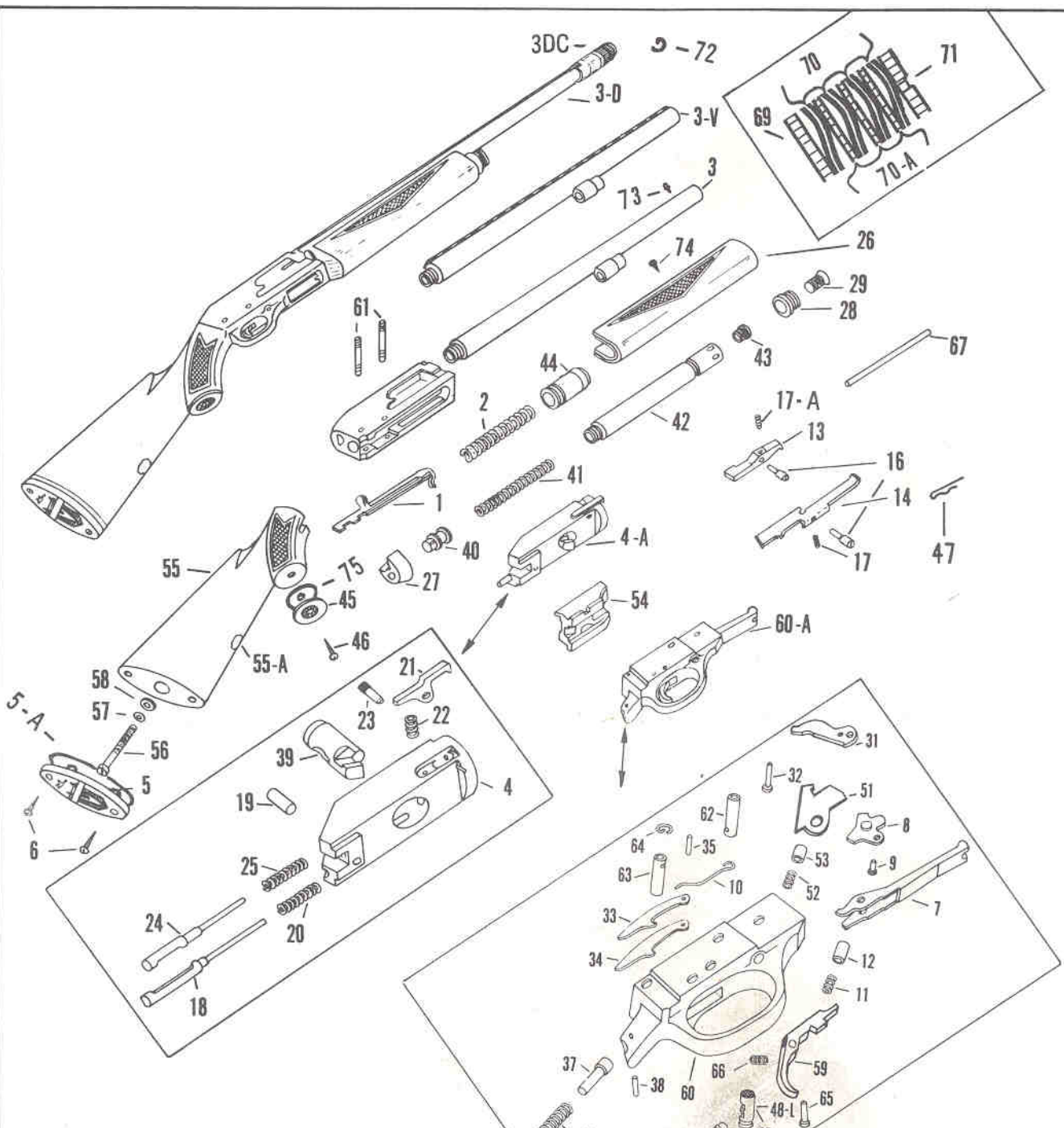
REFER TO THE AUTHORIZED PRICE LIST  
583.00 FOR CURRENT SELLING PRICES  
AND ORDERING INFORMATION.

**SEARS, ROEBUCK AND CO.-- U.S.A.**

**IN CANADA: SIMPSONS-SEARS, LIMITED**

APRIL 1964

PRINTED IN U.S.A.



**SPECIFICATIONS**

	Lightweight	3" Chamber with rib	Deluxe
Gauge	12 ga.	12 ga.	12 ga.
Choke	Full, Modified Improved Cylinder	Full	Three-position Adjustable Choke
Weight	7 1/2 lbs.	7 3/4 lbs.	8 lbs.
Length of pull	14 in.	14 in.	14 in.
Drop at Comb	1 1/2 in.	1 1/2 in.	1 1/2 in.
Drop at heel	2 1/2 in.	2 1/2 in.	2 1/2 in.
Barrel length	28 in.	28 in.	26 1/4 in.
Pitch	2 1/8 in.	2 1/8 in.	2 1/8 in.
Sight	Bead front sight	Bead front sight	Bead front sight
Length	47 7/8 in.	47 7/8 in.	46 1/4 in.

**PARTS LIST FOR**  
**SEARS MODEL 66 12 GAUGE AUTOMATIC SHOTGUN**  
**MODEL NO. 583.606**

WHEN ORDERING REPAIR PARTS, ALWAYS GIVE THE FOLLOWING INFORMATION  
AS SHOWN IN THIS LIST:

- |                     |                               |
|---------------------|-------------------------------|
| 1. THE PART NUMBER. | 3. THE MODEL NUMBER.          |
| 2. THE PART NAME.   | 4. THE IDENTIFICATION NUMBER. |

All parts identified with a dagger (†) must be fitted to the gun by gunsmiths in Sears gunshops, or by qualified gunsmiths. Do not order repair parts by key number, always use the part number.

REF. NO.	PART NO.	PART NAME	REF. NO.	PART NO.	PART NAME
1	757	†Action Bar	42	647	Magazine Tube
2	733	†Action Spring	43	648	Magazine Tube Cap
3	6691	†Barrel and Cylinder Assy. Plain	44	651	Piston
3V	6693	†Barrel and Cylinder Assy. with Ventilater Rib 3" Chamber	45	401	Pistol Grip Cap
			46	403	Pistol Grip Screw
3D	6692	†Barrel and Cylinder Assy. Deluxe with Choke Control and Ventilater Rib	47	865	Cartridge Stop Pin Ret. Clip (2)
			48	659	Safety Button, R.H.
3DC	8779	†Choke Assy.		751	Safety Button, L.H.
4	756	†Bolt	49	605	Safety Spring Plunger
4A	785	†Bolt Assy.	50	155B	Safety Plunger Spring
5	620	Butt Plate	51	873	Escapement Hook
5A	792	Butt Plate Trim	52	649	Trigger Spring
6	345	Butt Plate Screw	53	652	Trigger Spring Plunger
7	608	Cartridge Lifter	54	6664	Slide
8	677	†Cartridge Lifter Actuator Assy.		6655	Stock Assy. w/Recoil Pad
9	610	Cartridge Lifter Actuator Hinge Pin	55	686	Stock Assy.
10	675	Cartridge Lifter Actuator Spring	55A	178	Initial Plate
11	897	†Cartridge Lifter Spring	56	666	Stock Bolt
12	689	Cartridge Lifter Spring Plunger	57	667	Stock Bolt Lock Washer
13	612	Cartridge Stop, R.H.	58	668	Stock Bolt Washer
14	6687	†Cartridge Stop, L.H.	59	875	Trigger
16	864	Cartridge Stop Pin	60	746	Trigger Guard
17	777	Cartridge Stop Spring, L.H.		6652	Trigger Guard for 3" Chamber
17A	656	†Cartridge Stop Spring, R.H.	60A	888	Trigger Guard Assy.
18	739	†Ejector		6656	Trigger Guard Assy. for 3" Chamber
19	627	Ejector and Firing Pin Ret. Pin	61	671	Trigger Guard Ret. Pin
20	846	†Ejector Retracting Spring	62	672	Trigger Guard Ret. Pin Bushing, Front
21	755	Extractor, R.H.	63	673	Trigger Guard Ret. Pin Bushing, Rear
22	1022	Extractor Spring, R.H.	64	674	Trigger Guard Ret. Pin Bushing, Ret. Spring
23	119	†Extractor Pivot Pin			
24	626	Firing Pin	65	699	Trigger Hinge Pin
25	628	Firing Pin Retracting Spring	66	874	Escapement Hook Spring
26	658	Forehand Assy.	67	685	Wood Plug
27	630	†Forehand Base	69	752	Cylinder Washer
28	631	Forehand Cap	70	735	†(Cylinder) Wavy Spring (8)
29	6653	Forehand Cap Screw	70A	736	†(Cylinder) Spacer Washer (3)
31	876	†Hammer	71	754	Cylinder Nut
32	699	†Hammer Hinge Pin	72	11628	†Choke Click Spring
33	641	Hammer Strut, R.H.	73	130	†Front Sight
34	642	Hammer Strut, L.H.	74	617	Drive Screw
35	643	Hammer Strut Pin	75	402	†Pistol Grip Cap Trim
36	762	†Hammer Spring	N.I.	766	Choke Cap
37	639	Hammer Spring Guide	N.I.	6751	Recoil Pad
38	676	Hammer Spring Retaining Pin	N.I.	152	Recoil Pad Screws
39	691	Locking Pin			
40	645	Magazine Follower			
41	646	Magazine Spring			

Note: N.I. Not Illustrated  
For Illustration - See Page 2