

PARTS LIST FOR
J. C. HIGGINS
MODEL .22 CAL. "RANGER" REVOLVER
DOUBLE ACTION 9 SHOT

MODEL NUMBER

583.990

The Model Number will be found on the left side of barrel, just forward of receiver. Always mention this Model Number when communicating with us regarding the Ranger Revolver or when ordering parts.

PRICE LIST REFERENCE

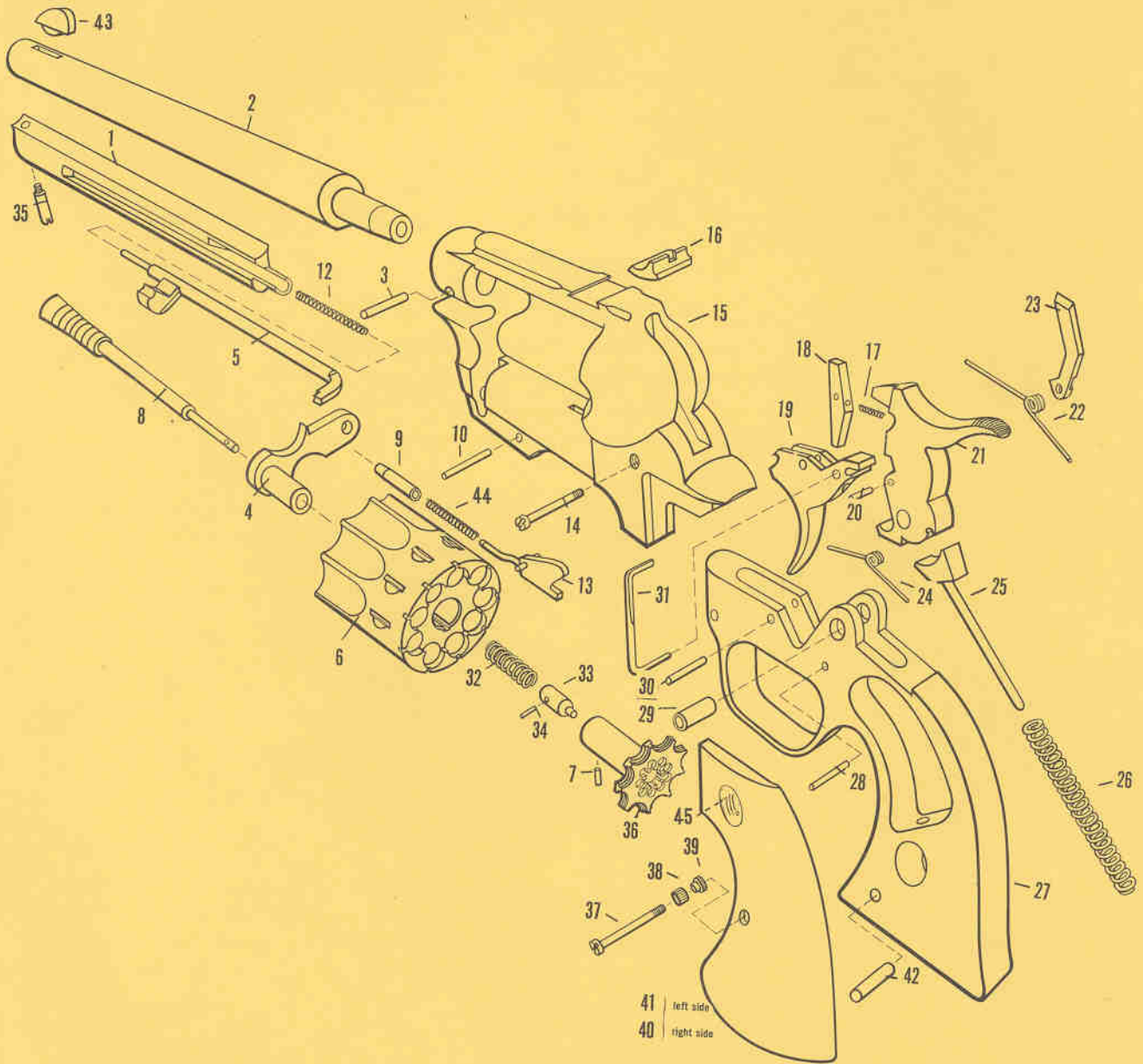
REFER TO THE DIVISION 6 AUTHORIZED PRICE LIST 583.00 FOR CURRENT SELLING PRICES, AVAILABILITY AND ORDERING INFORMATION.

Filing Instructions

File this Parts List immediately after Parts List Number 583.881 in the Division 6 Standard Nomenclature Grey Binder, Volume 2.

SEARS, ROEBUCK AND CO.—U.S.A.
IN CANADA: SIMPSONS-SEARS, LIMITED

October, 1958



PARTS LIST FOR
J. C. HIGGINS RANGER REVOLVER
MODEL NO. 583.990

WHEN ORDERING REPAIR PARTS, ALWAYS GIVE THE FOLLOWING INFORMATION AS SHOWN IN THIS LIST:

- | | |
|---------------------|----------------------|
| 1. THE PART NUMBER. | 3. THE MODEL NUMBER. |
| 2. THE PART NAME. | 4. THE NAME OF ITEM. |

All parts identified with a dagger (†) must be fitted to the gun by gunsmiths in Sears gunshops, or by qualified gunsmiths. Do not order repair parts by key number, always use the part number.

REF. NO.	PART NO.	PART NAME
1	7314	Ejector Latch Housing
2	7361	†Barrel
3	7104	†Barrel Pin
4	7357	†Crane Assembly
5	7318	Ejector Latch Rod Assembly
6	7109	Cylinder (Not sold separately. See Assy.)
N.I.	7155	Cylinder Assembly N.I.
7	7117	†Ejector Alignment Dowel
8	7362	Ejector Rod
9	7140	†Link Pivot Pin
10	7379	Trigger Guard Assembly Pin
12	7158	Ejector Latch Rod Spring
13	7162	Cylinder Stop Assembly
14	7333	Hammer Pivot Screw
15	7365	Frame
16	7344	Rear Sight
17	7131	†Hammer Pawl Spring
18	7129	†Hammer Pawl
19	7370	Trigger
20	7130	†Hammer Pawl Pin
21	7372	Hammer
22	7181	†Hand Spring
23	7185	†Hand
24	7380	Trigger Spring
25	7354	Hammer Spring Guide Assembly
26	7335	Hammer Spring
27	7371	Trigger Guard
28	7149	†Trigger Pivot Pin
29	7182	†Hammer Sleeve
30	7149	†Trigger Spring Retaining Pin
31	7134	†Hammer Safety Stop
32	7113	†Cylinder Lock Plunger Spring
33	7111	†Cylinder Lock Plunger
34	7112	†Cylinder Lock Plunger Pin
35	7317	Ejector Latch Housing Screw
36	7116	†Ejector
37	7368	Grip Screw
38	7363	Escutcheon
39	7364	Escutcheon Nut
40	7309	Grip, R.H.
41	7310	Grip, L.H.
42	7324	Grip Alignment Pin
43	7342	Front Sight
44	7158	†Cylinder Stop Spring
45	7369	Medallion
N.I.	7395	Barrel Front Sight Assembly
N.I.	7161	Ejector Assembly

N.I. Not Illustrated.